

BCC INFORMAL REGULAR SESSION

DATE: Thursday, February 16, 2012

<u>NAME</u>	<u>TITLE</u>	<u>AFFILIATION</u>	<u>PHONE/E-MAIL ADDRESS</u>
1. <u>Tom Yorgon</u>	<u>DIRECTOR</u>	<u>WATER RESOURCES</u>	
2. <u>Lyle Bloom</u>	<u>SAN. ENG.</u>	<u>WATER RESOURCES</u>	
3. <u>Faye Miller</u>		<u>Stouckie Turp</u>	<u>732-2462</u>
4. <u>Charles Tilbury</u>	<u>Chief Deputy Audit</u>		
5. _____	_____	_____	_____
6. _____	_____	_____	_____
7. _____	_____	_____	_____
8. _____	_____	_____	_____
9. _____	_____	_____	_____
10. _____	_____	_____	_____
11. _____	_____	_____	_____
12. _____	_____	_____	_____



76 SOUTH RIVERSIDE DRIVE
HERITAGE BUILDING - 3RD FLOOR
BATAVIA, OHIO 45103
MAIN 513-732-7363
FAX 513-732-7639

MEMORANDUM

To:

Commissioner Edwin Humphrey;

Commissioner Bob Proud;

Commissioner Archie Wilson;

Steve Rabolt

From: Dan Bare

Subject: Commissioner Salary Increase

Date: December 30, 2011

At the regular board meeting on December 21, 2011 the Clermont County Veterans' Service Commission approved the following motion:

Motion to submit letter to Clermont County Board of Commissioners to request increase of \$100.00 a month for the Veterans' Service Commissioner's salaries effective January 15, 2012.

Motion by Cliff Riley, second by Donald Chandler.

Abstains: Ken Cook

Motion carried 4-0-1.

Please inform us of your decision at your earliest convenience.

Cc: Howard Daugherty

Robert Derr

Cliff Riley

Ken Cook

Donald Chandler

Kathy Weaver

Andrea Bryant

TOPIC: Sanitary Sewer Service Agreement between Clermont and Warren Counties

CONTACT: Thomas C. Yeager, Director of Utilities (732-7930)

Purpose/Need: Warren County has requested extension of sanitary sewer service from Clermont County to serve the O'Bannon Creek drainage area in southeastern Warren County. Clermont County provides the nearest centralized public sewers in the general area.

Action Necessary: Board of Clermont County Commissioners to adopt the Resolution approving a Sanitary Sewer Agreement with the Warren County Board of Commissioners and establishing the service area as defined therein. Warren County Board of Commissioners would jointly adopt a Resolution accepting the referenced Agreement.

History of Project: Discussions were initiated between Clermont and Warren Counties in the fall of 2009 regarding sanitary sewer service to southeastern Warren County within the O'Bannon Creek drainage area. Warren County was specifically interested in making centralized public sewers available to the Hartz Mountain manufacturing facility located at 5374 Long Spurling Road to enable business expansion and economic development. Adjacent areas including Pleasant Plain were limited to on-site treatment systems and would also benefit from public sewers. Warren County could not reasonably construct sanitary sewers and treatment facilities to serve the area. Since Clermont County owned and operated public sewers of sufficient capacity within the general area, it was determined that the prudent approach would be an intergovernmental agreement between the counties to best serve the designated area.

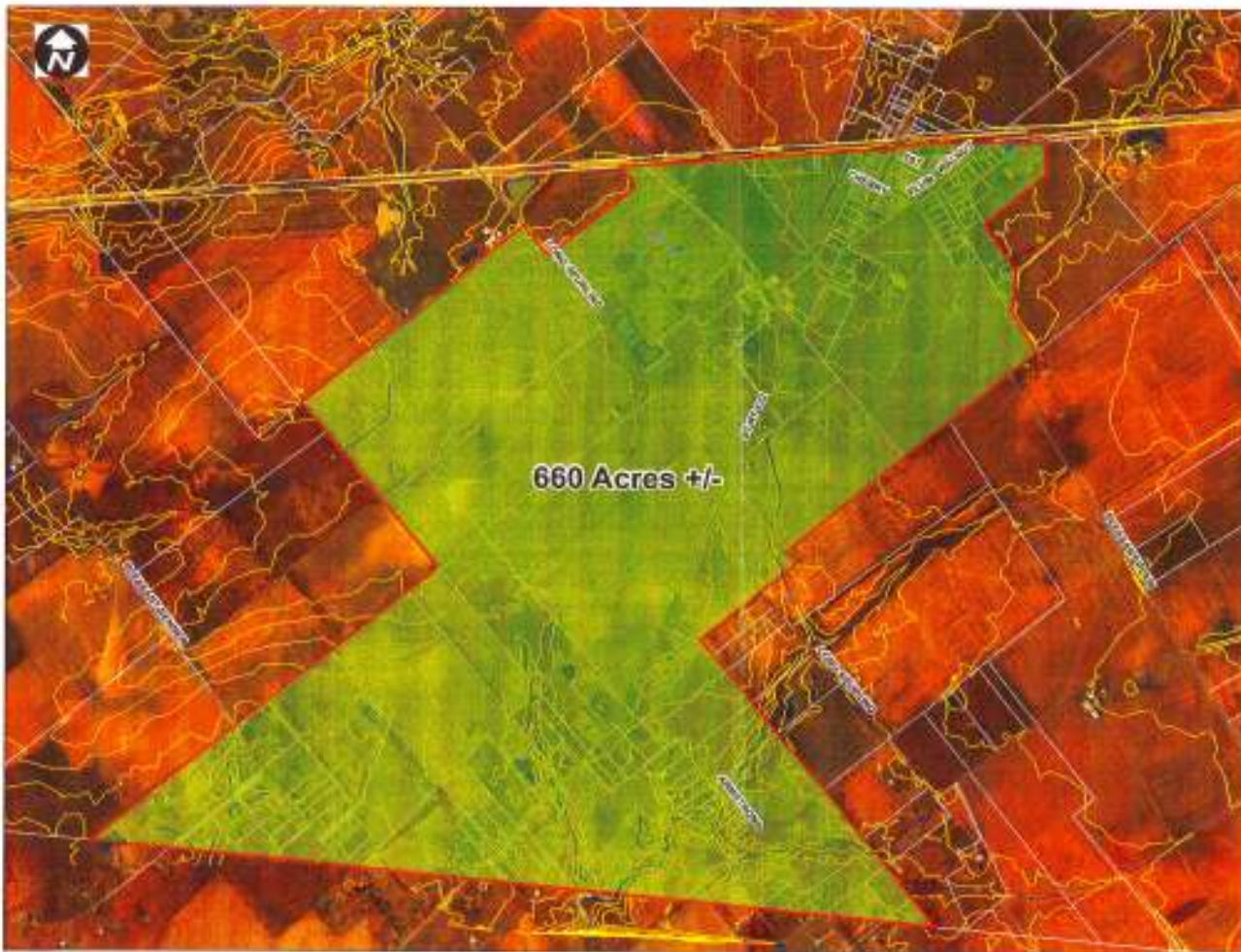
By adoption of the Resolution approving the Sanitary Sewer Agreement, public sewers will be extended at no cost to Clermont County to serve the designated area within Warren County contained in Exhibit "A". Clermont County will serve the area and administer its Rules and Regulations to all customers within the service area.

Expected Outcomes: Regional cooperation and best use of public funds relative to the provision of sewer service to citizens within Clermont and Warren Counties.

Time Period: Sewer service should be available by the end of 2012. The Sanitary Sewer Agreement is effective upon execution by both parties and shall remain in effect through December 31, 2030, with the option to renew for additional ten (10) year periods.

Responsible Department(s): Clermont County Water Resources Department.

**Exhibit A - Proposed
Clermont County
Sewer Service Area**



0 200 500 1,000 Feet
[Scale bar]

Legend

- [Yellow box] Service_Area
- [Green line] 4' Contour
- [Blue line] Hydro