

LITTLE FORK

Scott C. O'Reilly

Assistant Prosecutor Clermont County, Ohio

A LITTLE ABOUT ME



WHAT IS THE UNDERLYING
PROBLEM?



SOLUTION: LITTLE FORK
SOUTHWEST REGIONAL
FAMILY ADVOCACY CENTER



PHASE ONE



RECREATING THE EXISTING MODEL

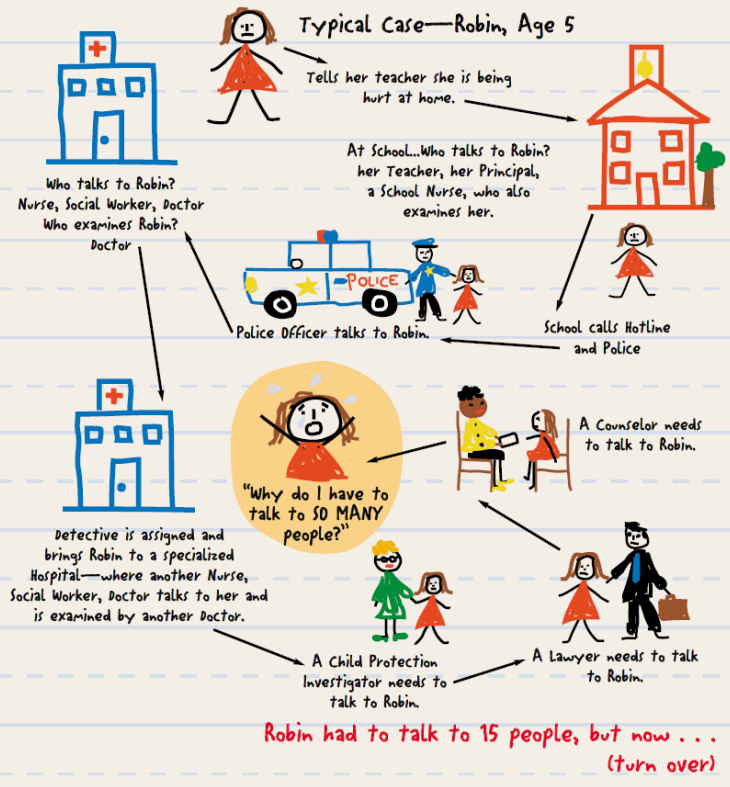
- The Mayerson Center at Cincinnati Children's Hospital currently operates as a Child Advocacy Center (CAC) for numerous counties in the Greater Cincinnati Area
- The Mayerson Center began operating out of the Clifton campus in 2000

OLD SYSTEM



Changing the Child Abuse System

WHAT USED TO HAPPEN WHEN KIDS NEEDED HELP FOR ABUSE



EXISTING SYSTEM



MULTI DISCIPLINARY TEAM

- Multidisciplinary teams are groups of professionals from diverse disciplines who collaborate to assess and provide recommendations on what steps should be taken on physical/sexual abuse cases.

LITTLE FORK SUPPORT

- Clermont County Prosecutors Office
- Clermont County Children's Protective Services
- Clermont County Victim Advocates
- Clermont County Sheriff's Department
- Miami Township Police Department
- Union Township Police Department
- Pierce Township Police Department
- Milford Police Department
- Goshen Township Police Department
- Bethel Police Department
- Batavia Police Department
- CASA
- YWCA Greater Cincinnati
- Department of Homeland Security
- Cincinnati Children's Hospital
- Child Focus
- Ohio Attorney Generals Office
- Beech Acres
- Highland County Prosecutors Office
- Brown County Prosecutors Office
- Adams County Prosecutors Office
- Brown County DJFS

SUCCESS STORIES

COLLABORATION ENDS
VIOLENT OFFENDER WITH
SIXTEEN PRIOR VIOLENT
OFFENSES



- <http://local12.com/news/local/man-sentenced-for-abducting-a-woman-who-jumped-out-of-a-moving-car-to-escape>

PHASE TWO





SITE



BAUER ROAD

CLERMONT CENTER DRIVE

PARK

EVENT CENTER PARKING 60 SPACES

EVENT CENTER 1 STORY 6,000 SF

YWCA PARKING 36 SPACES

DEAD END PARKING TO DISCOURAGE NON-YWCA PARKING

SHRINK PARKING TO 20 SPACES

ELIMINATE WALKWAY
CONNECT WALK

CAC 1 STORY 22,000 SF

FUTURE LEARNING CENTER BUILDING 1 STORY 5,000 SF

ROTATE BUILDING SLIGHTLY AND MOVE UP ADMIN BAR

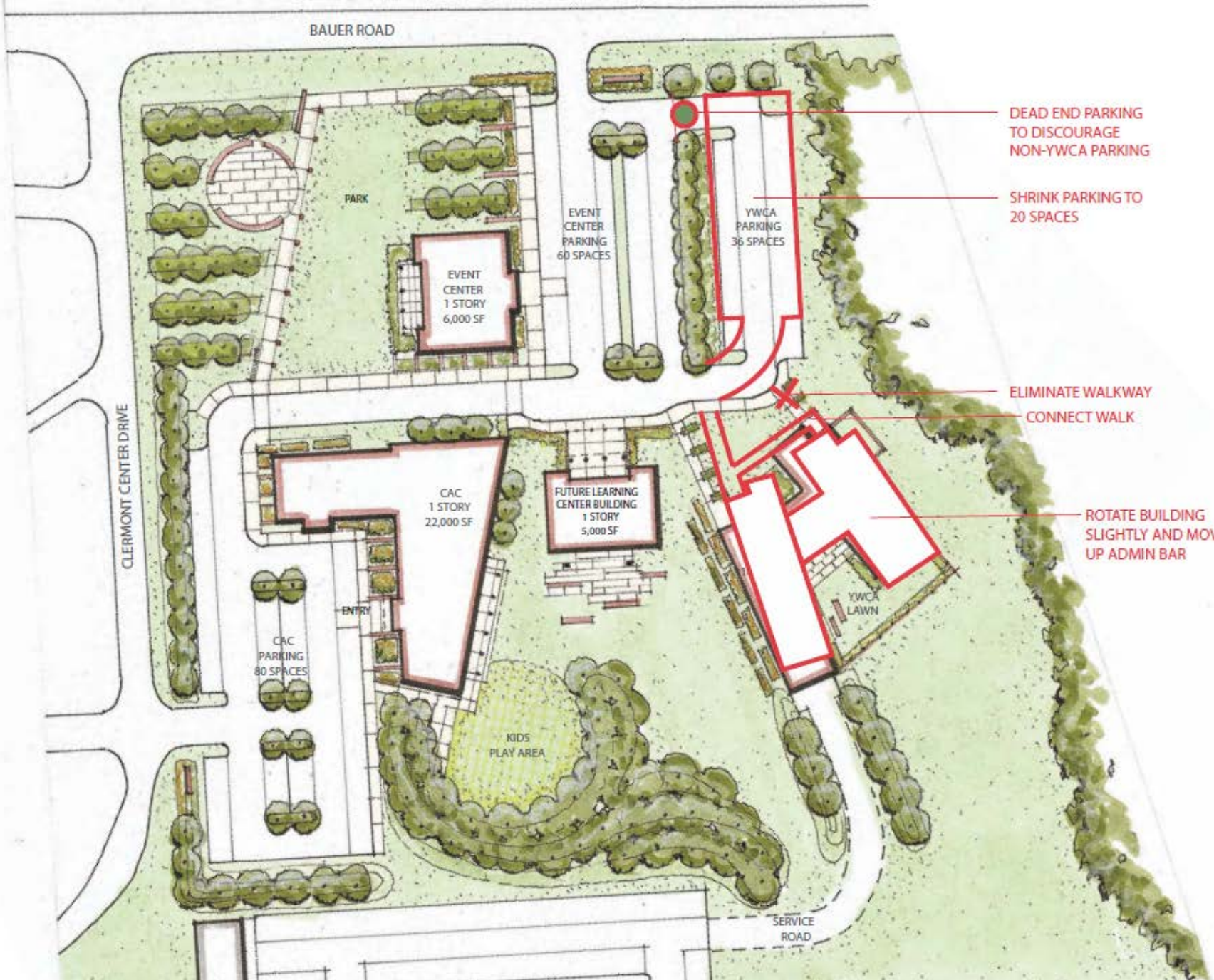
CAC PARKING 80 SPACES

ENTRY

KIDS PLAY AREA

YWCA LAWN

SERVICE ROAD





LITTLE FORK CHILDREN'S ADVOCACY CENTER
 SITE PLAN

ma architects

2015.161
 05.16.2018
 page 12

FAMILY ADVOCACY BUILDING

Little Fork Children's Advocacy Center Clermont County, OH

FACILITY PROGRAM

	Program NSF	Dept Gross	Building Gross
FACILITY TOTALS	13,796	18,996	20,896

	Quantity	SF Ea.	Room Total	Clinic Total		Comments
Public Area				4,696	6574	
Lobby	1	1000	1,000			public area
Waiting	40	25	1,000			seating area
Reception - Check In, Check Out	4	100	400			
Work area, supplies	1	100	100			
Family Counseling	2	130	260			
Public Toilets	6	56	336			
Large Play Area	1	1000	1,000			
Snack Bar	1	200	200			
Snack bar storage	1	100	100			
Seating	1	150	150			
Warming Kitchen	1	150	150			
Clinical Area				656	918	
Exam Room	2	120	240			
Exam toilet	1	56	56			
Interview Room	1	120	120			for children
Forensic Interview Room	2	120	240			
Clinical Support				1,310	1834	
Monitor Room	1	150	150			for children
SANE/PSANE Office	1	120	120			
Social Work Office	1	120	120			
CPS Casework Office	1	110	110			
Casework shared desk area	4	100	400			
Physician Office	1	110	110			
Files	1	100	100			
Conference Room	1	200	200			in clinic area
Legal				1,420	1988	
Interview Room	1	120	120			for adult
Monitor Room	1	150	150			
Prosecutor Office	2	120	240			
Law Enforcement work area	4	80	320			2 detect, 2 visit
Investigator Office	1	110	110			
Conference Room	1	400	400			in legal area
Recording Room	1	80	80			
Therapy Care Area				2,640	3696	
Play Therapy Room	1	250	250			
Therapy Viewing Room	1	150	150			
Shared work desk area	12	110	1,320			visitors
Classroom	1	400	400			
Family Respite Lounge	1	200	200			
Family Nook	4	80	320			

3/12/2018

ma architects

Little Fork Children's Advocacy Center Clermont County, OH

Administrative				420	588	
Director Office / Conf	1	220	220			in admin suite
Admin Support	2	100	200			
Staff Area				1,064	1490	
Staff Break	20	15	300			
Staff Coat Lockers	20	2	40			in break rm
Staff Toilet	4	56	224			
Storage General	1	200	200			
Storage Toys	1	300	300			
Building Services				1,590	1908	
Electrical Service	1	200	200			
Water Service	1	200	200			
Janitor	2	100	200			
I.T.	2	120	240			
Mechanical	1	500	500			
Receiving/Breakdown	1	250	250			

Gross Building Size

20,896

Conceptual Budget

	Cost/SF	Cost
Base Construction Cost	\$225	\$ 4,701,609.00
FFE and Medical Equipment Costs	\$50	\$ 1,044,802.00
I/T Cost	\$20	\$ 417,920.80
Land Development Estimate		\$ 750,000.00
SUB-TOTAL		\$ 6,914,331.80
Soft Costs (design fees, contingencies, permits, etc. at 30% of Construction Cost)		\$ 2,074,299.54
TOTAL ESTIMATED PROJECT COST		\$ 8,988,631.34

3/12/2018

ma architects

COMMUNITY CENTER

Little Fork Community Meeting Center

Clermont County, OH

FACILITY PROGRAM

	Program NSF	Dept Gross	Building Gross
FACILITY TOTALS	7,668	8,698	9,568

	Quantity	SF Ea.	Room Total	Clinic Total		Comments
Public Area				968	1258	
Vestibule	1	120	120			
Reception - Office	2	100	200			
Public Toilets	8	56	448			
Warming Kitchen	1	200	200			
Meeting Area				6,000	6600	
Large Group Room	3	2000	6,000			
Building Services				700	840	
Electrical Service	1	150	150			
Water Service	1	150	150			
Janitor	1	100	100			
I.T.	1	100	100			
Mechanical	1	200	200			

Gross Building Size

9,568

Conceptual Budget

	Cost/SF	Cost
Base Construction Cost	\$180	\$ 1,722,283.20
FFE Costs	\$20	\$ 191,364.80
I/T Cost	\$10	\$ 95,682.40
Land Development Estimate		\$ 250,000.00
SUB-TOTAL		\$ 2,259,330.40
Soft Costs (design fees, contingencies, permits, etc. at 30% of Construction Cost)		\$ 677,799.12
TOTAL ESTIMATED PROJECT COST		\$ 2,937,129.52

COMMUNITY CENTER – TWO STORY

Little Fork Community Meeting Center

Clermont County, OH

FACILITY PROGRAM

	Program NSF	Dept Gross	Building Gross
FACILITY TOTALS	16,918	18,923	20,816

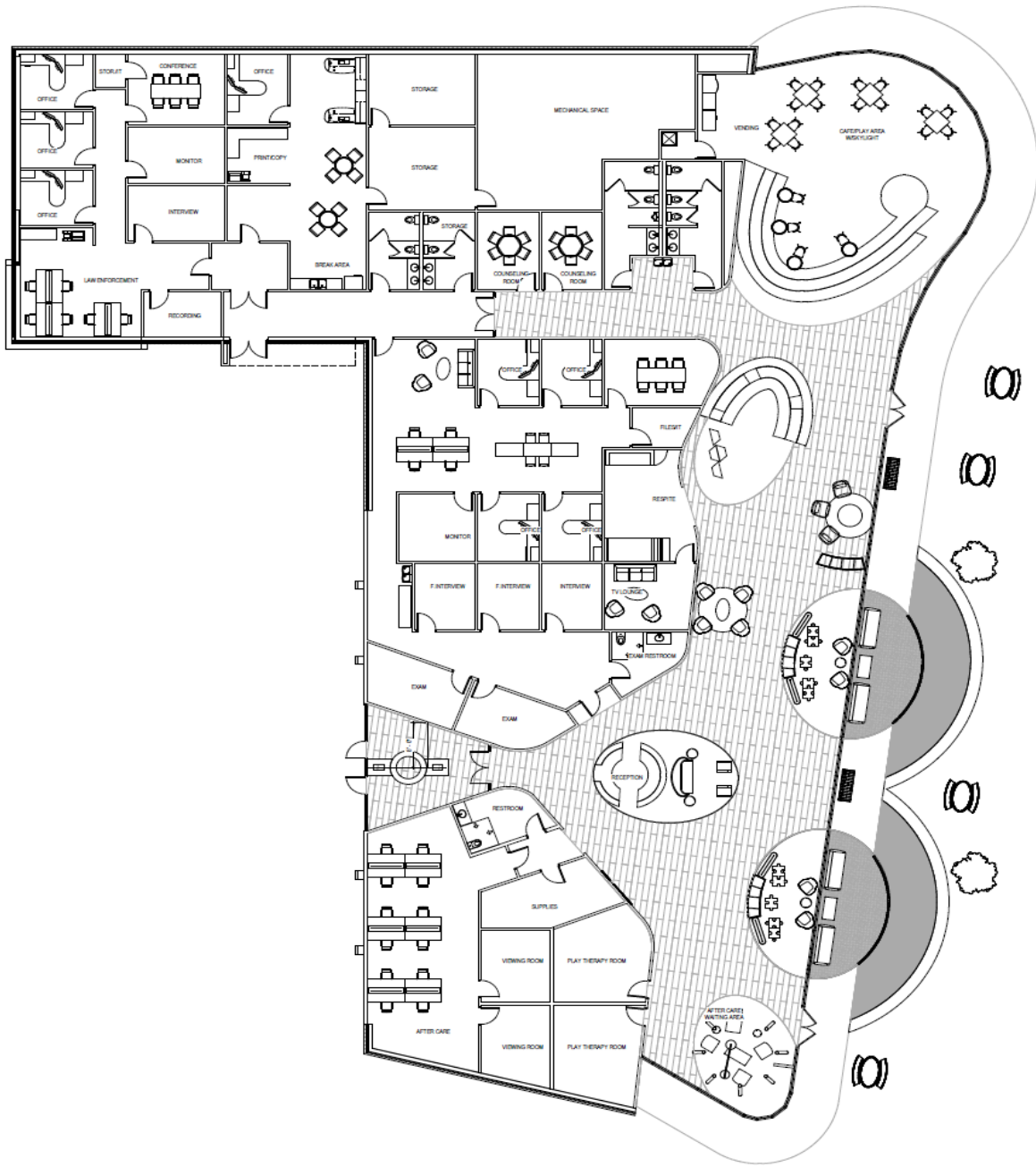
	Quantity	SF Ea.	Room Total	Clinic Total		Comments
Public Area				1,218	1583	
Vestibule	1	120	120			
Reception - Office	2	100	200			
Public Toilets	8	56	448			
Warming Kitchen	1	200	200			
Press Room/Conference Room	1	250	250			
Meeting Area				6,000	6600	
Large Group Room	3	2000	6,000			
Business/Office Second Floor				9,000	9900	
Office Area	1	9000	9,000			
Building Services				700	840	
Electrical Service	1	150	150			
Water Service	1	150	150			
Janitor	1	100	100			
I.T.	1	100	100			
Mechanical	1	200	200			

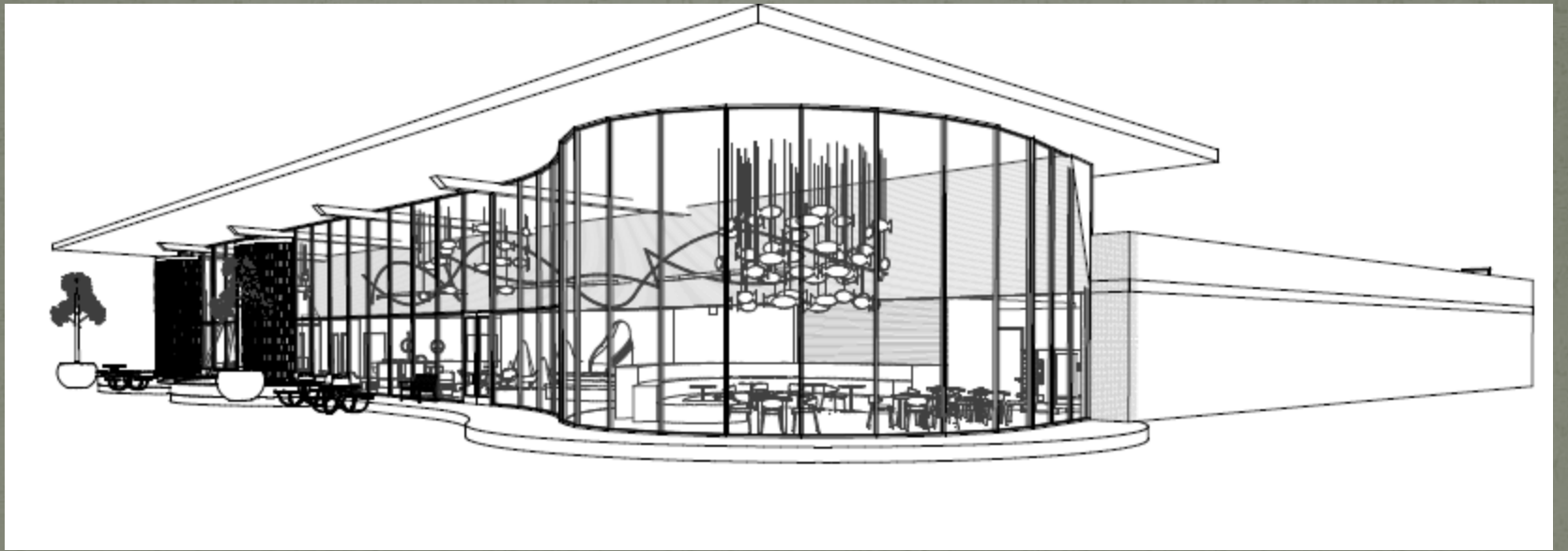
Gross Building Size

20,816

Conceptual Budget

	Cost/SF	Cost
Base Construction Cost	\$180	\$ 3,746,833.20
FFE Costs	\$20	\$ 416,314.80
I/T Cost	\$10	\$ 208,157.40
Land Development Estimate		\$ 250,000.00
SUB-TOTAL		\$ 4,621,305.40
Soft Costs (design fees, contingencies, permits, etc. at 30% of Construction Cost)		\$ 1,386,391.62
TOTAL ESTIMATED PROJECT COST		\$ 6,007,697.02



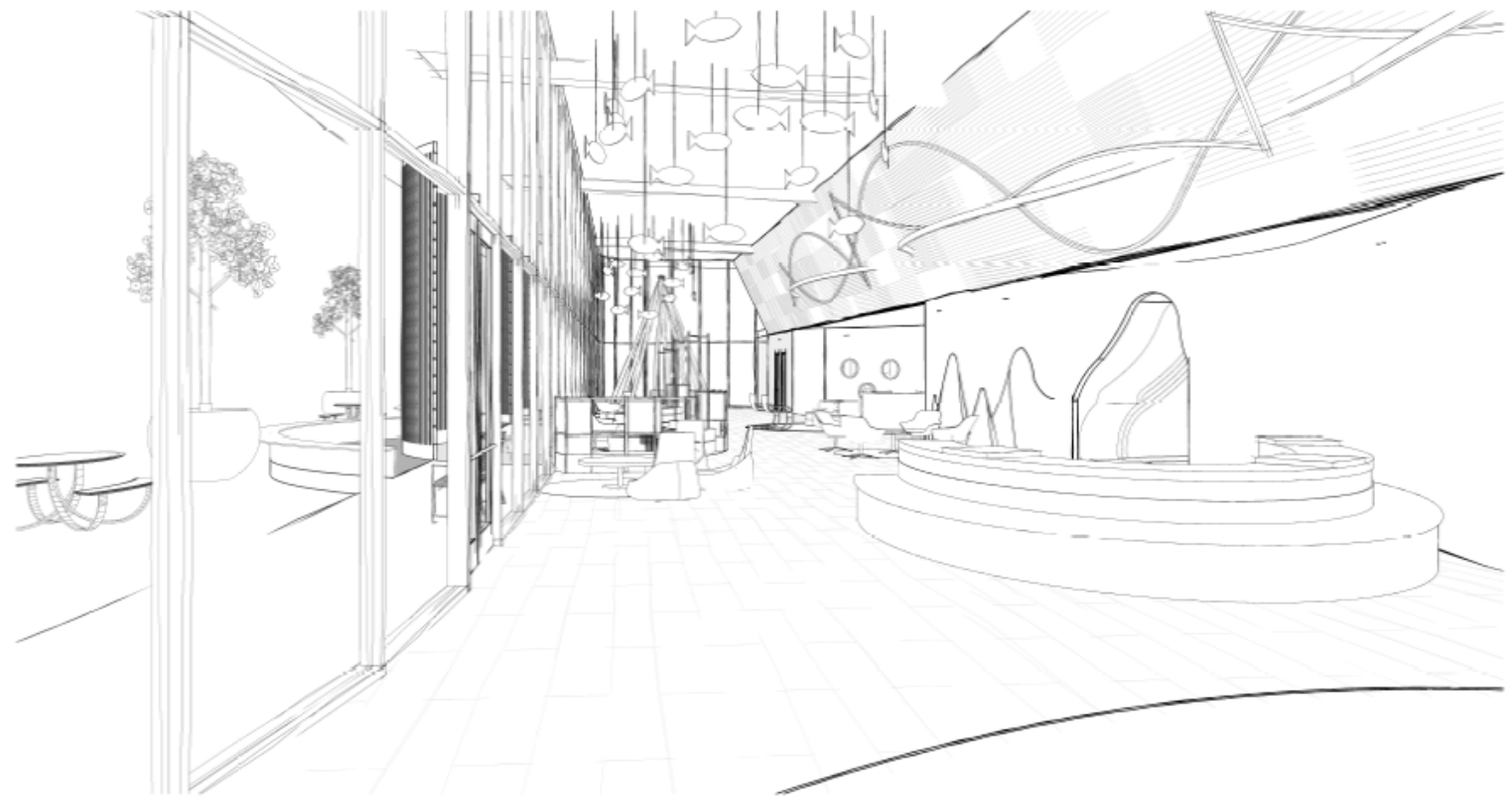




LITTLE FORK CHILDREN'S ADVOCACY CENTER
CONCEPT EXTERIOR PERSPECTIVE

ma architects

2015.161
05.16.2018
page 19





LITTLE FORK CHILDREN'S ADVOCACY CENTER
CONCEPT INTERIOR PERSPECTIVE

ma architects

2015.161
05.16.2018
page 20

YWCA SHELTER

**eliminating racism
empowering women**

ywca

Greater Cincinnati

YWCA SHELTER GOALS

- Safe & Healing
- Empowering
- Individual experiences with social connection
- Service-oriented
- Site that connects with nature and the Community

A word cloud graphic featuring the following terms in various sizes and colors (red, orange, black): healing, site, flexible, reconnect, connection, trust, individual, focused, normalcy, safe, community, welcoming, autonomy, independent, empowering, unrestricted, self-care, nature, comfort, service.

“We shape our buildings;
thereafter they shape us.”

- Winston Churchill

Trauma-Informed Design Principles

- Familiar forms & materials mean home
- Less open at public façade, more open at private fence promotes safety
- Design that emphasizes daylight, nature, and landscape
- Views and connections support choice
- Privacy to counter abuse and promote autonomy
- Meaningful healing experiences throughout

YWCA SHELTER

YWCA Clermont County Shelter

Program SF/Area Allocation



Category	Area	Quan.	Square Feet	Comments
Entrance				
Vestibule/Foyer	100 SF	1	100 SF	Secured Vestibule for screening & resident security Enhance security & privacy
Intake				
Intake / Conference	100 SF	1	100 SF	Adjacent to vestibule & Reception
Play area	80 SF	1	80 SF	
Restroom/Shower/Changing	100 SF	1	100 SF	Allow people the dignity of cleaning up upon entry and reduce spreading of bad bugs, flu, etc.
Office/Staff Area				
Reception / Desk Workarea	120 SF	1	120 SF	
Storage	50 SF	1	50 SF	
Cluster Manager	100 SF	1	100 SF	
Admin Manager	80 SF	1	80 SF	3 A/C Units ceiling
Medical Call Room	80 SF	1	80 SF	
Staff Restroom	50 SF	1	50 SF	
Staff Break Room/Volunteer	100 SF	1	100 SF	Must operate as break room, volunteer coalition area, and provide locker space for volunteer belongings. Includes lockers & restrooms.
Coop/Seating	120 SF	1	120 SF	
Storage	60 SF	1	60 SF	
Conference Room	350 SF	1	350 SF	Should be flexible enough to serve as 12-18 person conference room, workshop, group meeting.
Staff Laundry	50 SF	1	50 SF	Adjacent to locker
File	30 SF	1	30 SF	Check lock for case records
Aluminum Desk (Desk case manager)	50 SF	1	50 SF	
Shared Living				
Main Dining	300 SF	1	300 SF	
Small Dining	220 SF	1	220 SF	
Kitchen	190 SF	3	570 SF	3 cooking areas, as w/range/wet/dish/wc. Immediate adjacency to Dining
Pantry	40 SF	1	40 SF	Locking cabinets for personal storage, plus shared community resources
Wash Room	200 SF	1	200 SF	
TV Room	140 SF	1	140 SF	
TV Room	80 SF	1	80 SF	
Reading Library	200 SF	1	200 SF	
Quiet Library	130 SF	1	130 SF	
Quiet Library	80 SF	1	80 SF	
Children's Play Room	120 SF	1	120 SF	Interior Windows connect spaces for improved visual supervision
Teen Room	120 SF	1	120 SF	
Work Art Room	200 SF	1	200 SF	Art therapy, life skills, computers, small discussion groups, flexible furniture, internal storage closet
Pronees / Yoga	170 SF	1	170 SF	Internal Storage - Yoga mats / etc. Minimal exercise equipment
Public Restrooms	50 SF	3	150 SF	
Aluminum Workstation	50 SF	2	100 SF	
Private Residential				
Single Bedroom	240 SF	12	2880 SF	Twin beds all rooms w/ individual bathrooms, Bedrooms subdivided into 2+ bedrooms
Double Bedroom	300 SF	4	1200 SF	Space for double bed for family accommodations
Laundry Room	300 SF	4	1200 SF	Responsible for own linens and laundry
Staff Station/Storage	40 SF	1	40 SF	
Storage/Support				
Linear Storage (in residential wing)	50 SF	1	50 SF	
Outdoor Closet (in residential wing)	40 SF	1	40 SF	
Linear Storage (in residential wing)	50 SF	1	50 SF	
Maintenance Storage (in residential wing)	70 SF	1	70 SF	
Resident Supplies	40 SF	1	40 SF	
Reception	240 SF	1	240 SF	Reception, waiting and storage furniture
Furniture/Built Storage	300 SF	1	300 SF	
Maintenance Storage	70 SF	1	70 SF	
Maintenance Storage	100 SF	1	100 SF	Tool, workshop storage
Excess personal belongings	130 SF	1	130 SF	
Storage Space	210 SF	1	210 SF	Direct Exterior Access - separate ventilation
Loading	110 SF	1	110 SF	Off door for deliveries.

180523 Little Fork YWCA Program.xls/24/20181

YWCA Clermont County Shelter

Program SF/Area Allocation



Category	Area	Quan.	Square Feet	Comments
Sub TOTAL				
Crushed / Mechanical			1260 SF	
TOTAL SF			3920 SF	Includes Elevator & two stairs
Outdoor Program				
Personal Belongings Storage				Limited Access for Residents excessive personal belongings (interior access)
Garden				Playground & Seating Spaces, Picnic tables plus lounge seating.
Accessibility Services				Seating & Access Road
Dog Run / Fenced area				
Parking				Allow for 20 cars
2nd floor Patio/Outdoor deck	300 SF			Patios patio accessed from indoors only to reduce cigarette track on property
1st floor terrace				Tables and chairs for seating outdoors in courtyard.
Costs				
Site			\$775,000.00	
Core / Shell			\$2,900,000.00	Cost / SF
Fit-out			\$2,900,000.00	\$333 / SF
Contingency / Escalation			\$700,000.00	
Equipment / FF&E			\$500,000.00	
Owner Cost / Soft Cost			\$1,400,000.00	
Total			\$7,940,000.00	

180523 Little Fork YWCA Program.xls/24/20182

FIRST FLOOR PLAN



- Residence
- Shared Living
- Support
- Office/Admin
- Garden
- Fencing
- * Secure Entry
- ➔ Resident Entry
- ➔ Main Entry

SECOND FLOOR PLAN



- Residence
- Shared Living
- Support
- Office/Admin
- Garden
- Fencing
- * Secure Entry

BUILDING SHAPE - COURTYARD



BUILDING SHAPE - COURTYARD



• YWCA COMMITMENT

- 150 year history
- Providing domestic violence services since 1970
- Highest quality services for all
- Trauma Informed
- Family Centered
- Safety and Healing
- Dignity

YWCA COMMITMENT

- Full support by 30 member Board of Directors and Executive Staff
- Work diligently to secure funding
- Valued Partnerships
- Community Collaboration is key

PHASE TWO GOALS

- Incorporate
- Designate an Agent
- Hire a coordinator
- Create a website
- Develop new partners
- Seek out grant funding
- Raise funds for the 80%/20% match
- Expand the footprint
 - Brown County
 - Adams County
 - Highland County
 - Hamilton County
- Replicate the services currently provided at Cincinnati Children's Hospital Mayerson Center

PHASE THREE



PHASE THREE GOALS

MAKE IT HAPPEN!!!!

WHAT WE NEED



COUNTY COMMISSIONER NEEDS

- Public Support of this project
- Lease/Lease purchase/Lease option to purchase
 - ORC 307.02
 - ORC 307.09(B)